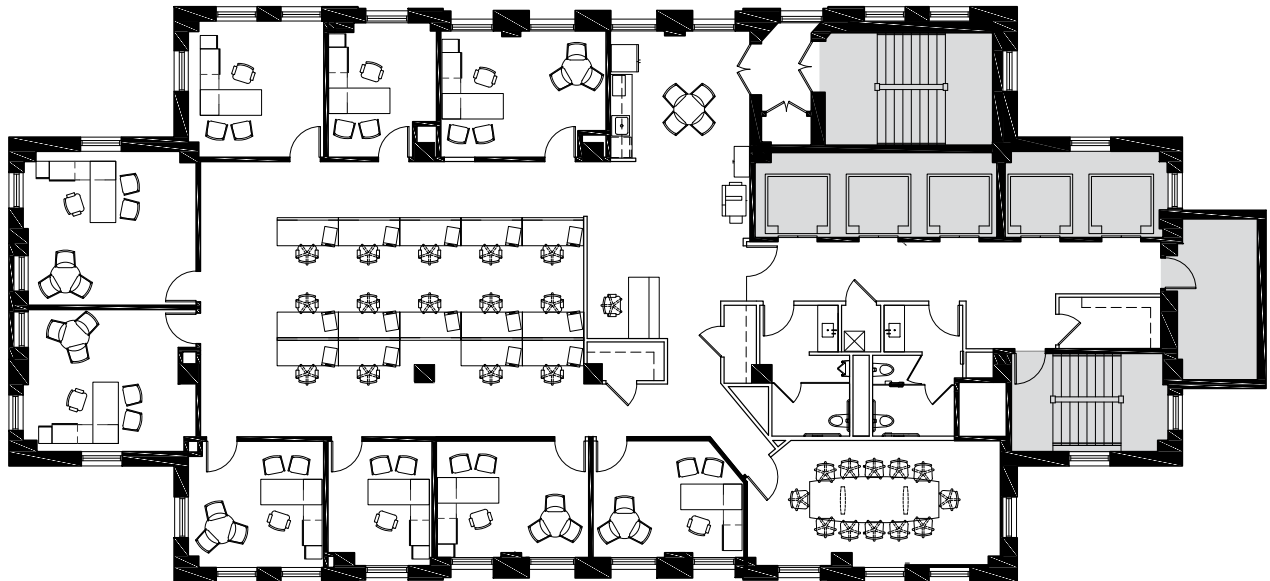


THIRTY THR33

NORTH LASALLE

SUITE 3000

4,793 SF



Single tenant tower floor | reception | conference room | kitchen | 9 privates offices | 14 workstations



FOR LEASING INFORMATION

KATHLEEN BERTRAND

+ 1 312 881 7046

kathleen.bertrand@transwestern.com

ERIC MYERS

+ 1 312 881 7017

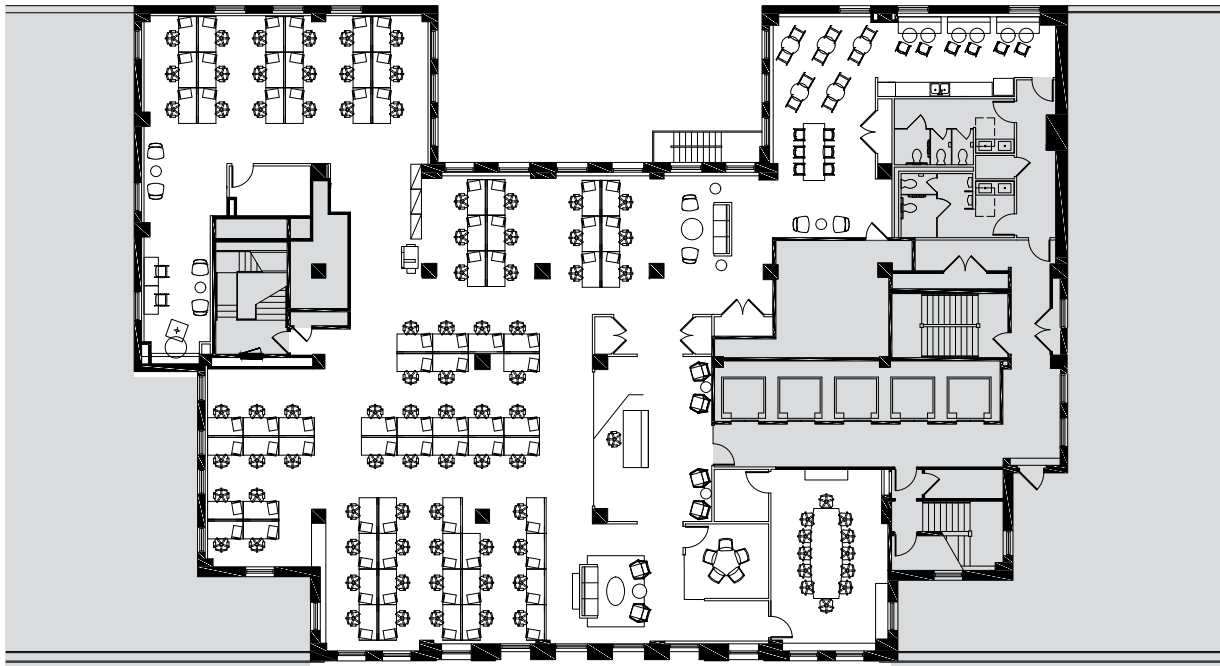
eric.myers@transwestern.com

THIRTY THR33

NORTH LASALLE

SUITE 2300

8,963 SF



70 workstations | 12 person conference room | 6 huddle areas | open kitchen

[Click for proposed furniture plan](#)



FOR LEASING INFORMATION

KATHLEEN BERTRAND

+ 1 312 881 7046

kathleen.bertrand@transwestern.com

ERIC MYERS

+ 1 312 881 7017

eric.myers@transwestern.com

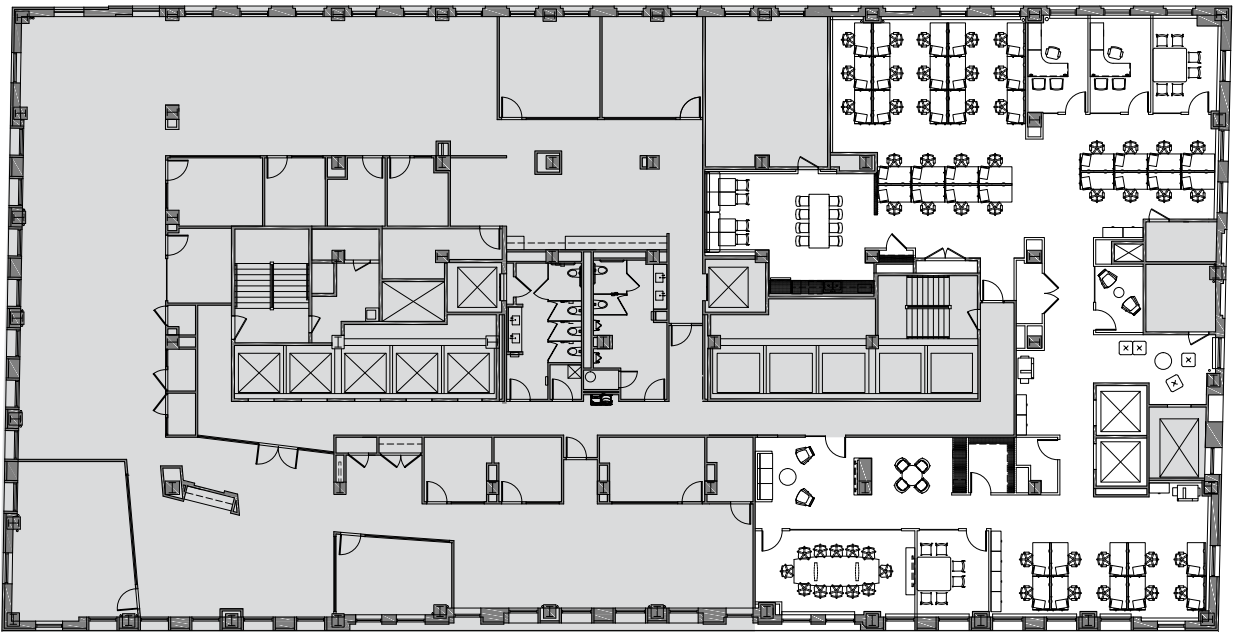


The John Buck Company

THIRTY THR33 NORTH LASALLE

SUITE 1050

5,704 SF



4 private offices | 41 workstations | 12 person conference room | reception | huddle areas | open kitchen

[Click for proposed furniture plan](#)



FOR LEASING INFORMATION

KATHLEEN BERTRAND

+ 1 312 881 7046

kathleen.bertrand@transwestern.com

ERIC MYERS

+ 1 312 881 7017

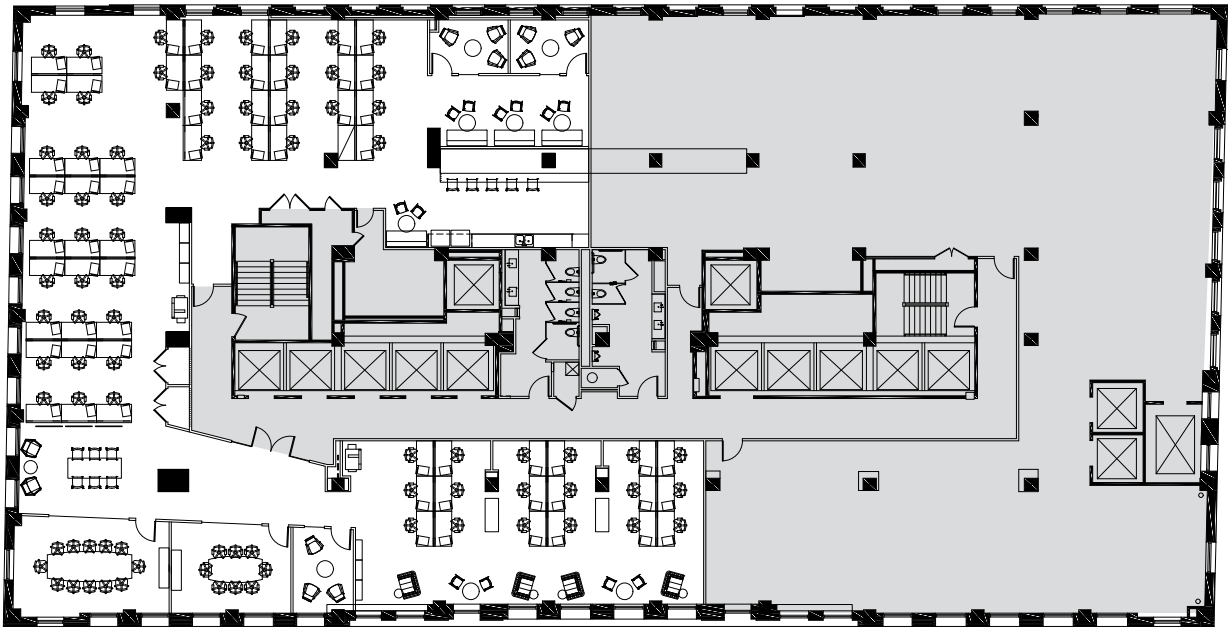
eric.myers@transwestern.com

THIRTY THR33

NORTH LASALLE

SUITE 700

8,044 SF



64 workstations | 2 conference rooms | 3 huddle rooms | open kitchen

[Click for proposed furniture plan](#)



FOR LEASING INFORMATION

KATHLEEN BERTRAND

+ 1 312 881 7046

kathleen.bertrand@transwestern.com

ERIC MYERS

+ 1 312 881 7017

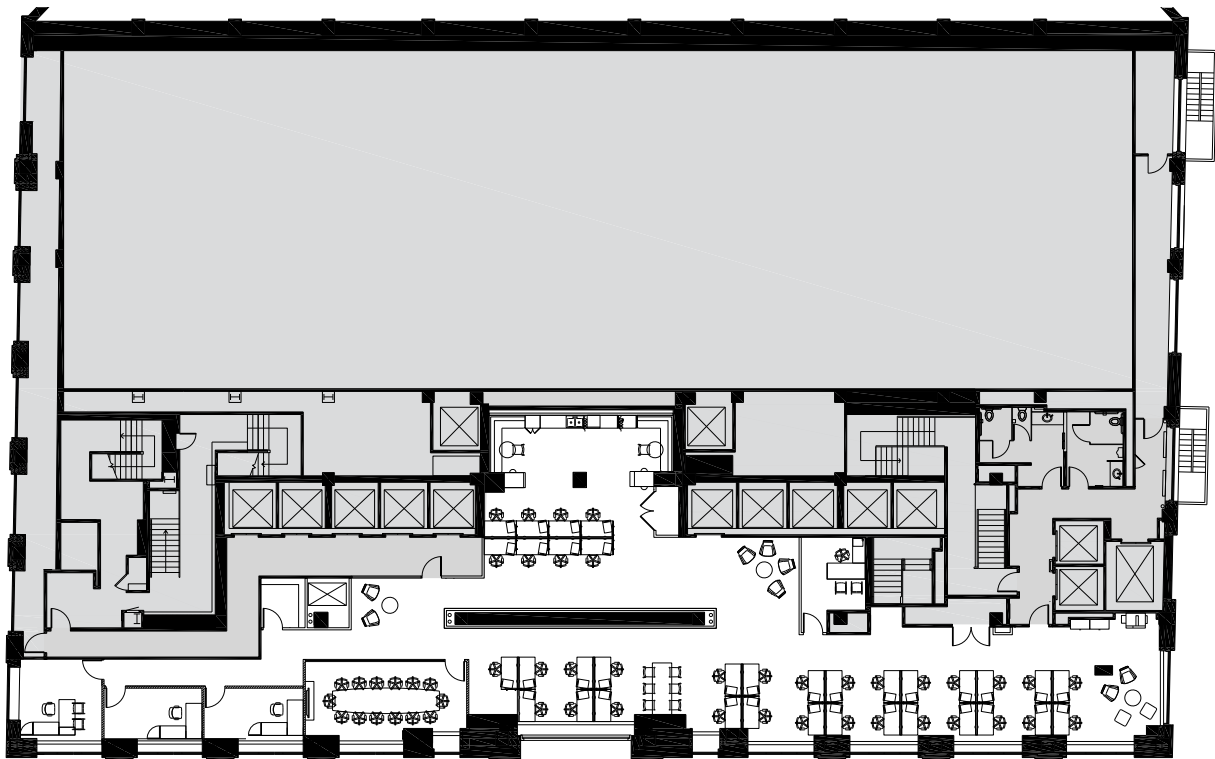
eric.myers@transwestern.com

THIRTY THR33

NORTH LASALLE

SUITE 400

7,117 SF



4 private offices | 35 workstations | 14 person conference room | open kitchen

[Click for proposed furniture plan](#)



FOR LEASING INFORMATION

KATHLEEN BERTRAND

+ 1 312 881 7046

kathleen.bertrand@transwestern.com

ERIC MYERS

+ 1 312 881 7017

eric.myers@transwestern.com